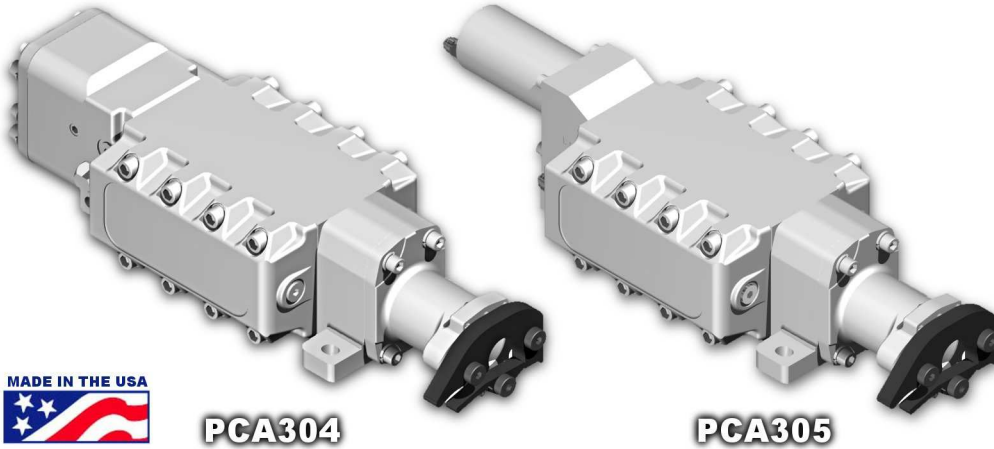


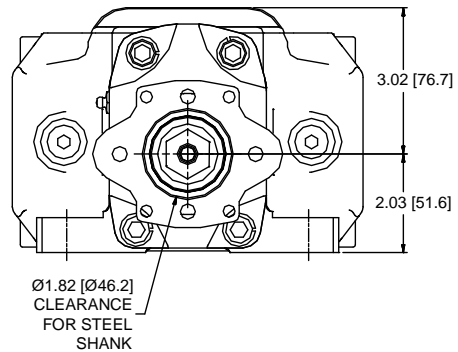
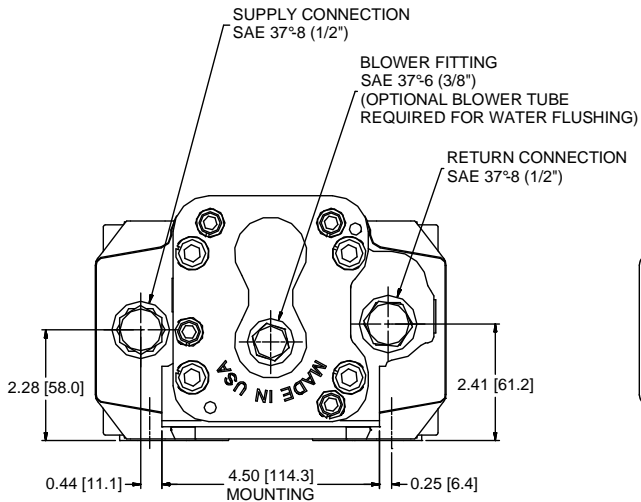
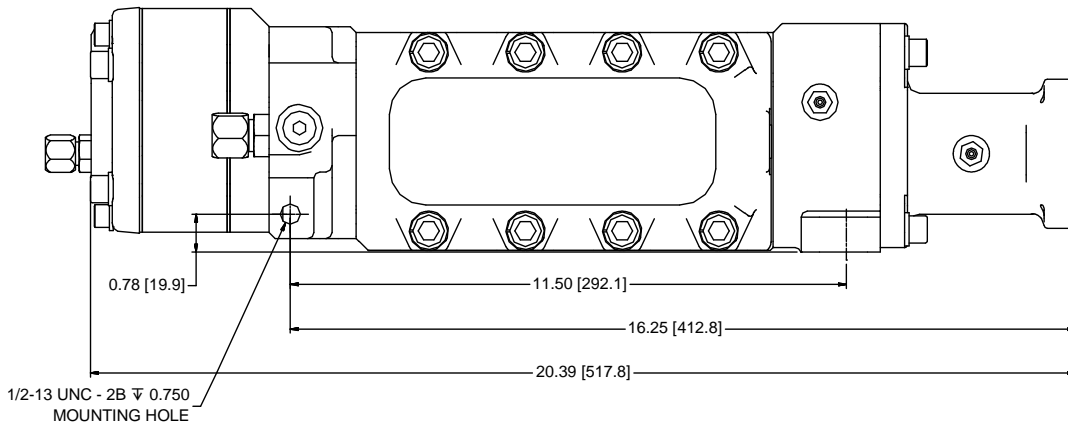
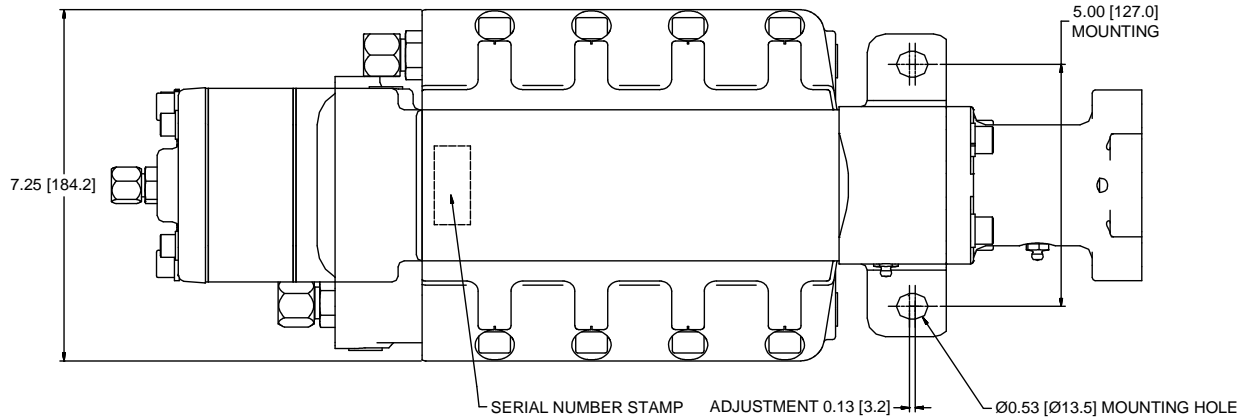
PCA 300 Series Percussive Rock Drills



300 Series Specifications		
Model	PCA304	PCA305
Blows/min [Hz]	4320 [72]	4200 [70]
Rotation, RPM	100-250	0-250
Reversible	No	Yes
Rotary Torque, ft-lbs [N-m]	60 [81] at max pressure	70 [95] at max pressure (95 [129] optional motor)
Max Impact Power, Hp [kW]	5.0 [3.7]	7.5 [5.6]
Flow, gpm [lpm]	10 - 13 [38 - 49] (incl. rotation)	12 - 16 [45 - 61] (incl. rotation)
Pressure, psi [bar]	1600-2100 [110-145]	1800-2200 [124-152]
Weight, lbm [kg]	84 [38]	78 [35]
Drill Steel Shank	Hex 7/8" x 4 1/4" [22 x 108] and 1" x 4 1/4" [25 x 108]	Hex 7/8" x 4 1/4" [22 x 108] and 1" x 4 1/4" [25 x 108]
Steel Retainer	* Positive Quick Release standard (patented)	* Slotted, Full Circle, and Quick-Release options available
Hole Size, in [mm]	1.0 - 1.75 [25 - 44]	1.00 - 2.25 [25 - 57]
Typical Applications	Dowelling	Excavator mount, quarry bar, roof bolting

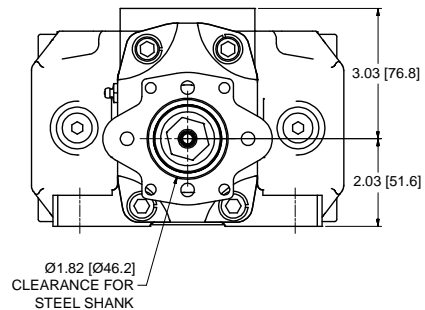
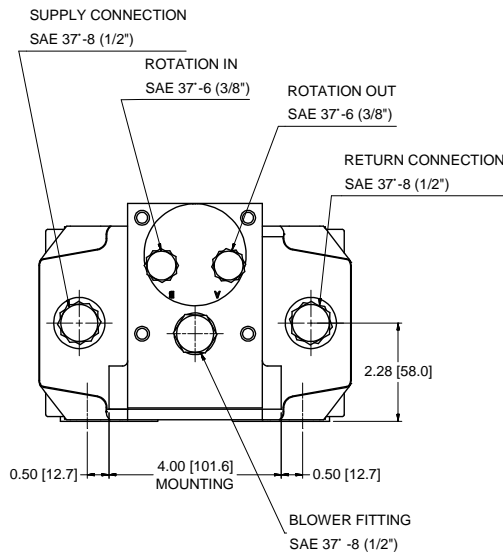
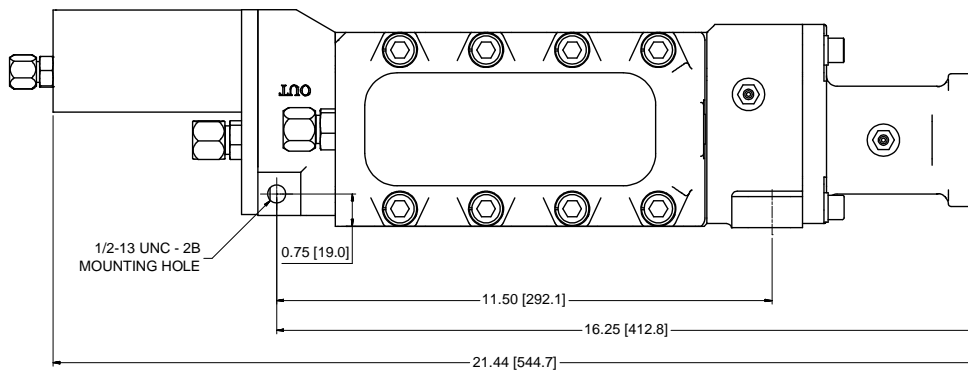
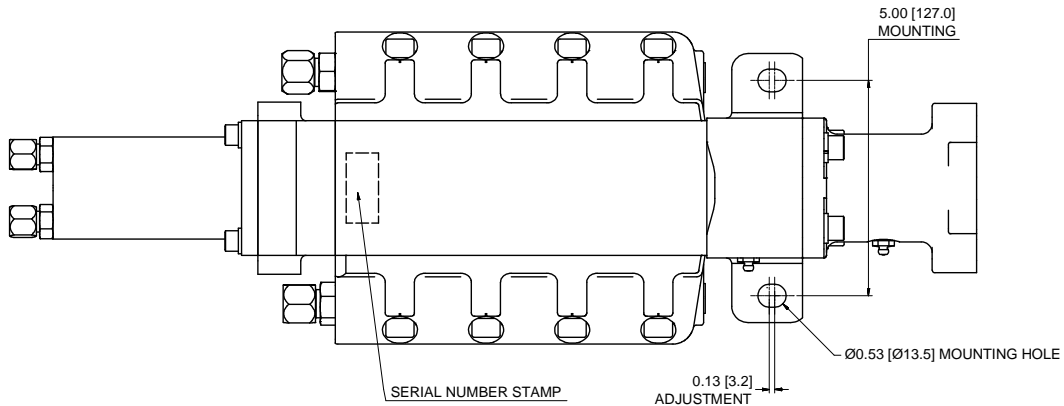
* Optional and custom retainer systems are available to fit your application.

PCA 304 Dimensions



For more information, contact
PCA Mechanical Engineering:
 271 Laymantown Rd, Troutville, VA 24175-6715
 Ph: (540) 977-3702, Fax: (540) 977-3578
 Email: pcainfo@pca-research.com Web: www.pcarockdrills.com

PCA 305 Dimensions



For more information, contact
PCA Mechanical Engineering:
 271 Laymantown Rd, Troutville, VA 24175-6715
 Ph: (540) 977-3702, Fax: (540) 977-3578
 Email: pcainfo@pca-research.com Web: www.pcarockdrills.com